

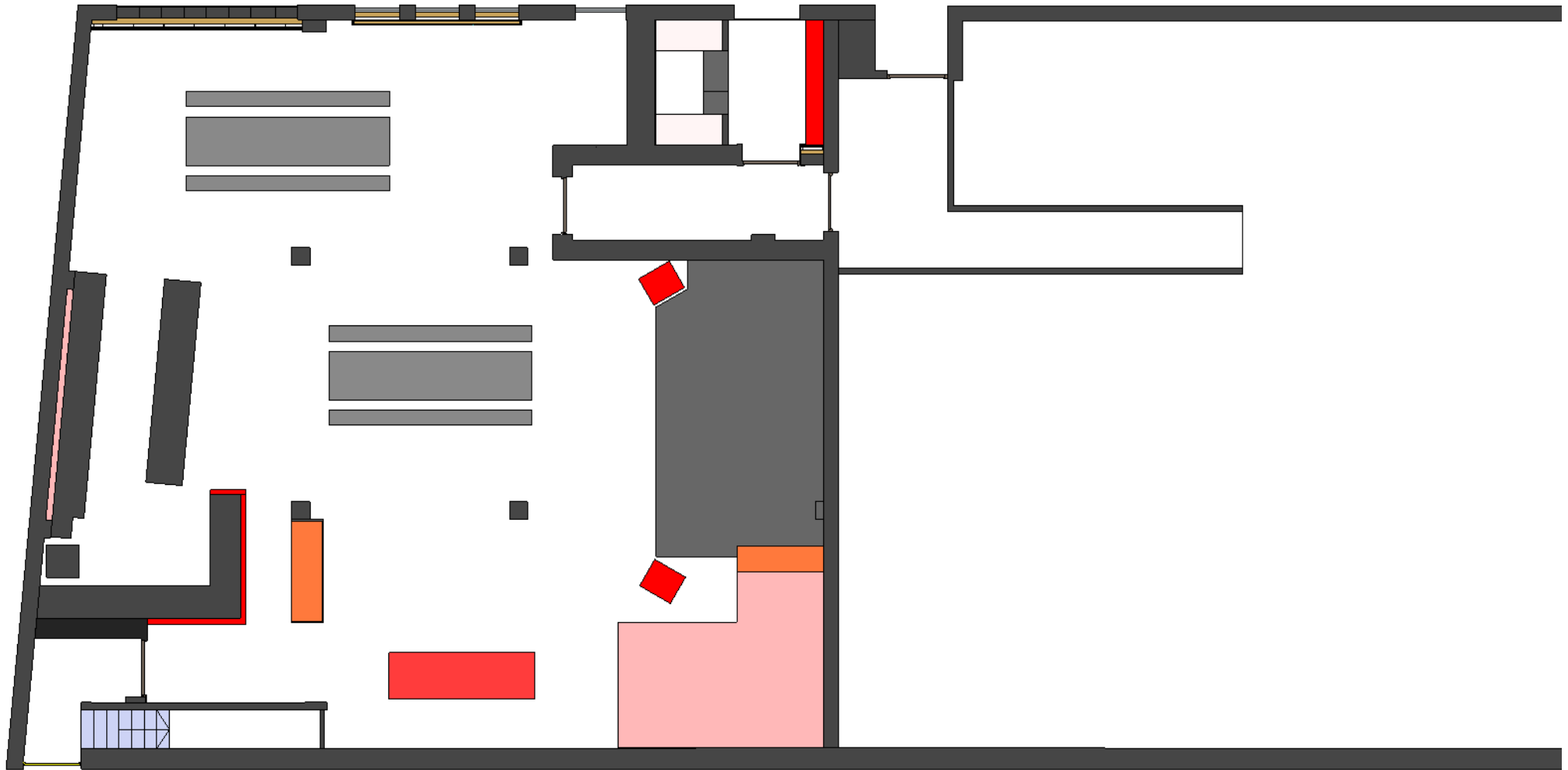


## **Table Plans**

The following three drawings show table layout options - please decide and confirm which iteration best suits your hire. In addition we have 50+ chairs that can be used in addition or exclusively in a conferencing layout.

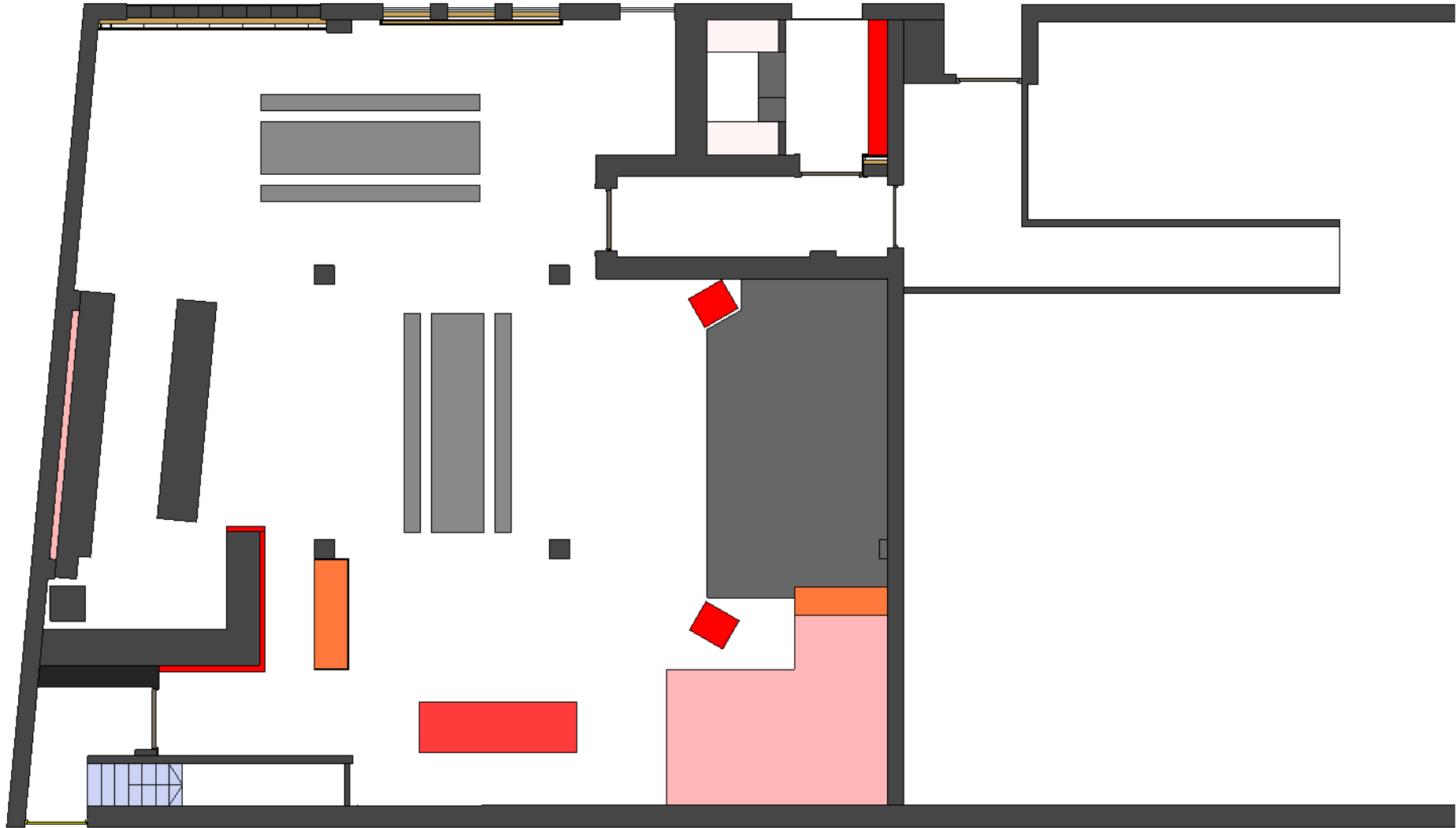
**Table Plan 1**

1 table orientated toward stage  
Each table seats 12 comfortably with one chair to each end  
not shown.



**Table Plan 2**

1 table orientated toward stage / rotated Plan 1  
Each table seats 12 comfortably with one chair to each end  
not shown.



**Table Plan 3**

2 tables orientated toward stage  
Each table seats 12 comfortably with one chair to each end  
not shown.

